

Welcome to the AccessibilityOnline Webinar Series



A collaborative program between the
National Network of ADA Centers and the
US Access Board



The Session is Scheduled to begin at 2:30pm Eastern Time

We will be testing sound quality periodically

The content and materials of this training are property of the US Access Board and the DBTAC - Great Lakes ADA Center and cannot be used and/or distributed without permission. This program is funded under award #H133A060097 from the U.S. Department of Education through the auspices of the National Institute on Disability and Rehabilitation Research (NIDRR) and an inter-agency agreement with the U.S. Access Board. For permission to use training content or obtain copies of materials used as part of this program please contact us by email at adata@adagreatlakes.org or toll free (877)232-1990 (V/TTY)

www.AccessibilityOnline.org

(877) 232-1990(V/TTY)

Presenters

U.S. Access Board



Scott Windley



Dave Yanchulis

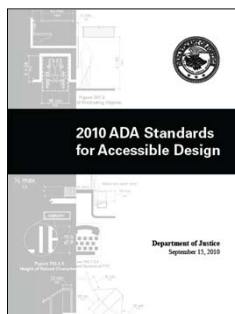
Accessible Doors

Session Agenda

- Where required
- Manual Doors
- Automated Doors
- Questions

3

New ADA Standards



DOJ's 2010 standards
(mandatory March 15, 2012)



**Based on the Board's ADA-
ABA Guidelines (2004)**



4

ADA and ABA Standards

ADA :

- DOJ's standards (2010)
- DOT's standards (2006) for transit facilities



ABA (Federal Sector):

- ABA standards updated (GSA, DOD, USPS)
- Update of HUD standards still pending
- (UFAS still applies to housing covered by ABA)

5

Door & Entrance Scoping

Section 206 (Accessible Routes)



p. 55



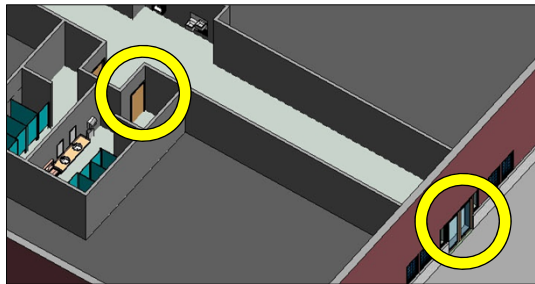
p. 23

TABLE OF CONTENTS	
ADA CHAPTER 1: APPLICATION AND ADMINISTRATION	5
101 Purpose	5
102 Dimensions for Adults and Children	5
103 Equivalent Facilitation	5
104 Conventions	5
105 Referenced Standards	8
106 Definitions	12
ADA CHAPTER 2: SCOPING REQUIREMENTS	18
201 Application	18
202 Existing Buildings and Facilities	18
203 General Exceptions	21
204 Protruding Objects	22
205 Operable Parts	23
206 Accessible Routes	32
207 Accessible Means of Egress	32
208 Parking Spaces	33
209 Passenger Loading Zones and Bus Stops	35
210 Stairways	36
211 Drinking Fountains	36
212 Kitchens, Kitchenettes, and Sinks	37
213 Toilet Facilities and Bathing Facilities	37
214 Washing Machines and Clothes Dryers	38
215 Fire Alarm Systems	39
216 Signs	39
217 Telephones	42

6

Doors Scoping (206.5)

- Covers doors providing user passage at:
- required accessible entrances
- accessible rooms/spaces (at least 1)
- along accessible routes & MOE



7

Doors Scoping (206.5)

- Additional requirements:
- Transient Lodging: all guest rooms must have doors meeting 32" clear width
- Dwelling Units: all doors in accessible units must comply



8

Entrances (206.4)

- At least 60% of public entrances must comply
- Public entrance = any entrance that is not a service or restricted entrance

9

Entrances

- In addition to the 60% requirement:
- direct access from parking structures (all)
- direct access from tunnels or elevated walkways
- different fixed routes in transit facilities
- entrances to each tenant space
- restricted entrance (at least 1)
- secured entrance (at least 1)



10

Secured Entrances (404.1)

- Doors operated only by security personnel exempt from provisions for:
 - Hardware (404.2.7)
 - Closing speed (404.2.8)
 - Opening force (404.2.9)
- (automated doors subject to clear width & threshold requirements only)



11

Rooms & Spaces

- All rooms/spaces must comply in new construction unless exempted/ partially scoped
- Exceptions:
 - areas raised for security, life/fire safety
 - machinery/ equipment spaces
 - certain single occupant structures
 - other spaces listed in 203 (General Exceptions)



12

Rooms & Spaces

- Work Areas (203.9):
- Entry doors/ gates must comply (most other requirements do not apply in the ADA standards)



13

Stairwells

- Doors on accessible route/ MOE must comply
- (e.g., route to area of refuge or emergency exit in stairwell)



14

Doors Covered (404)

- **Manual: swing, sliding, folding (404.2)**
- **Automated: full powered and low energy/
power assisted (404.3)**
- **Gates also covered by 404**
- **Revolving doors (including automated) can't
serve as accessible door**



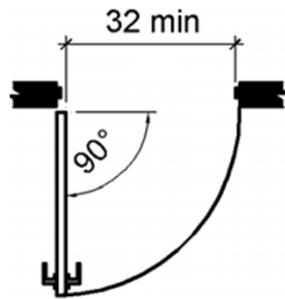
15

Manual Doors

16

Clear Width (404.2.3)

32" min. measured from stop to face of door open 90°

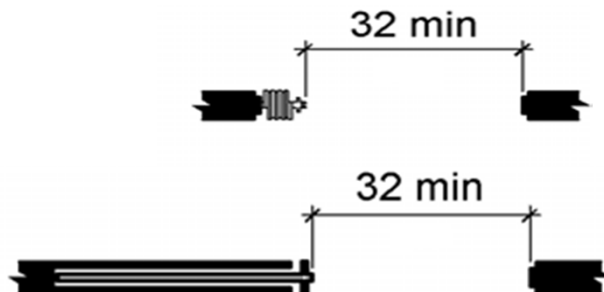


alterations: 5/8" max. projection
into latch side stop allowed

17

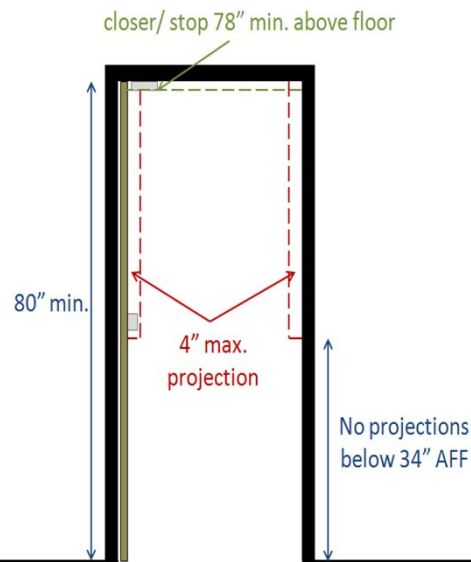
Clear Width

32" min. clear width: sliding and folding doors



18

Clear Width

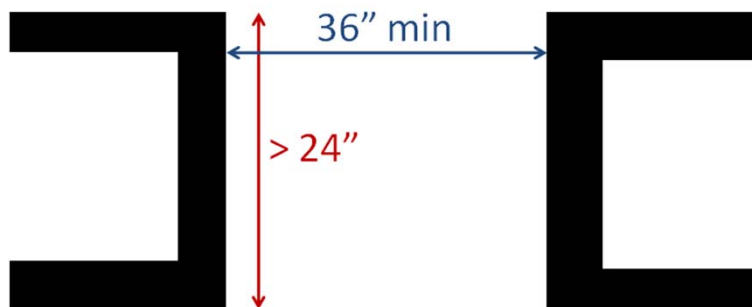


**Limited
projections into
door clear width**

19

Clear Width

**36" min. clear width required if opening
more than 24" deep**



20

Maneuvering Clearances (404.2.4)

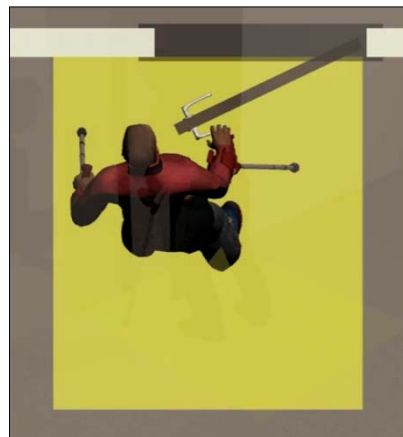
- Minimum space for positioning/
maneuvering at doors



21

Maneuvering Clearances

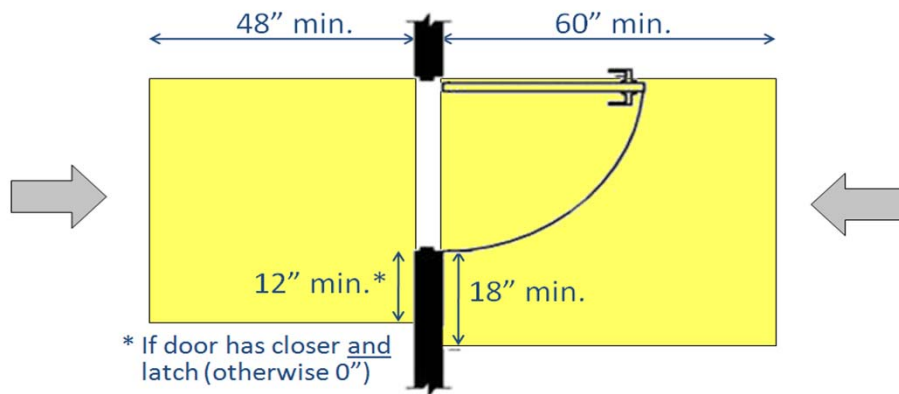
- Accommodates all types of mobility aids



22

Maneuvering Clearances

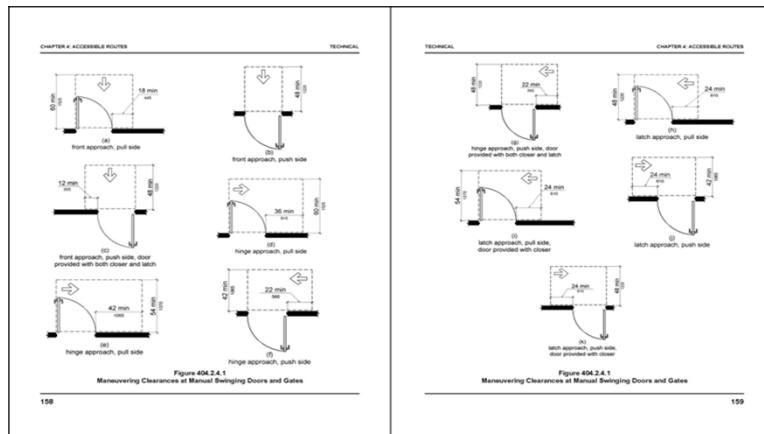
Forward Approach



23

Maneuvering Clearances

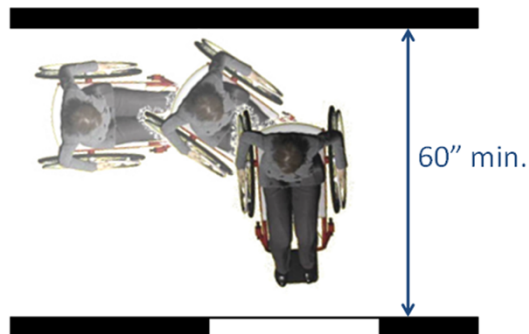
- Forward, latch-side, hinge-side approaches



24

Maneuvering Clearances

If space is at least 60" deep, a forward approach can be provided (instead of side)



25

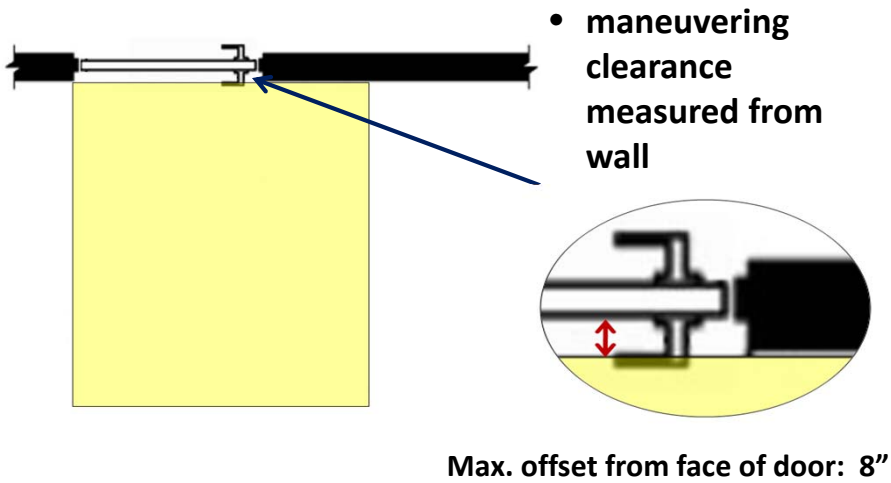
Maneuvering Clearances



- clearance applies to full height (80" min.)
- No changes in level (other than thresholds)

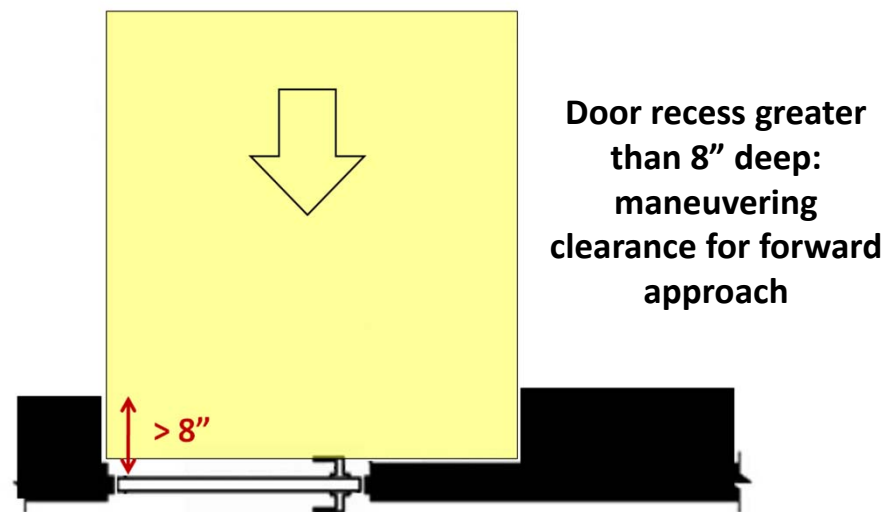
26

Maneuvering Clearances



27

Maneuvering Clearances



28

Maneuvering Clearances



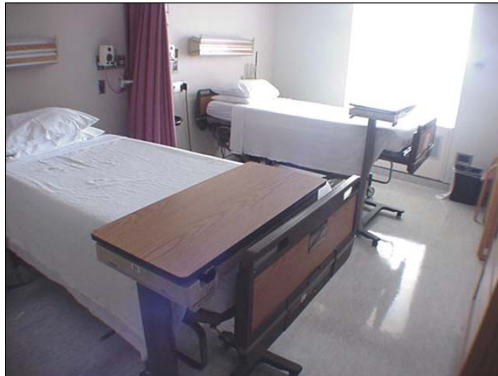
Recess: 8" max.



Recess: greater than 8"

29

Maneuvering Clearances



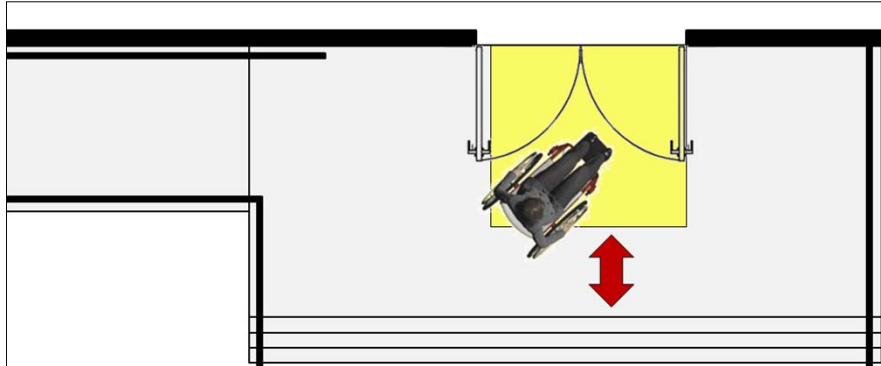
**Hospital Patient Rooms:
latch side clearance not required at entry doors
(404.2.4, exception)**

30

Maneuvering Clearances

Landings must accommodate maneuvering clearance

Tip: Locate maneuvering clearance away from stair openings/ drop-offs

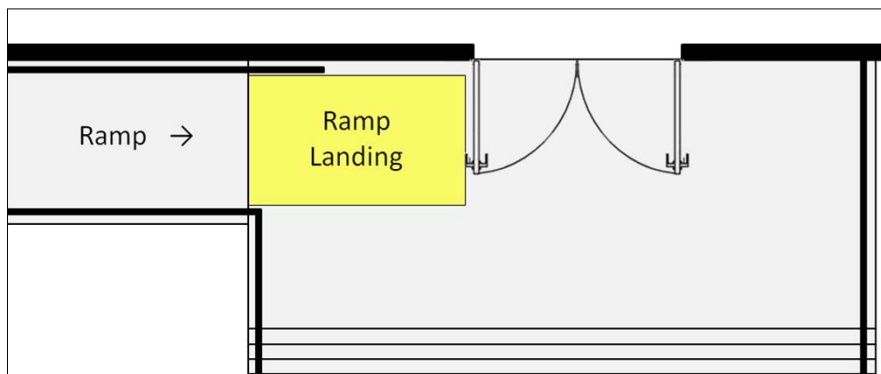


31

Landings

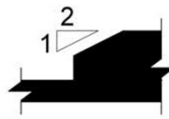
Maneuvering clearance and ramp landings can overlap

Tip: Locate doors outside ramp landings to prevent hazards



32

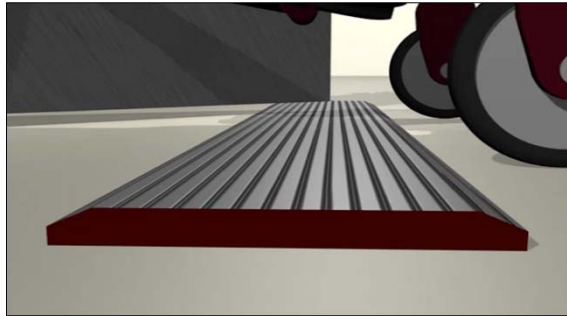
Thresholds (404.2.5)



$\frac{1}{2}$ " max. (beveled)

$\frac{1}{4}$ " max. (vertical)

Existing/altered: $\frac{3}{4}$ " (beveled) allowed



33

Doors in Series (404.2.6)

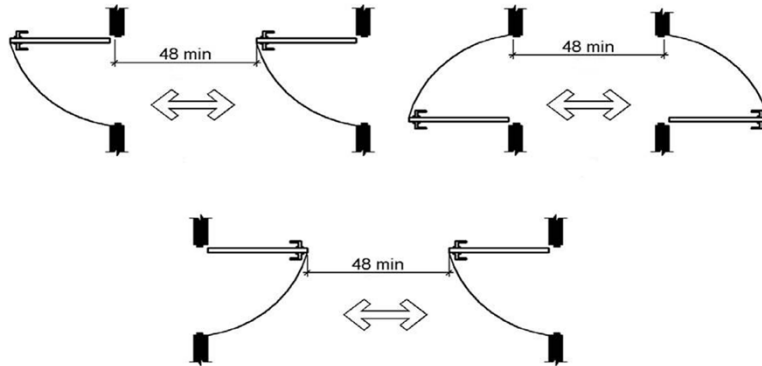
48" min. separation between swing of doors



34

Doors in Series

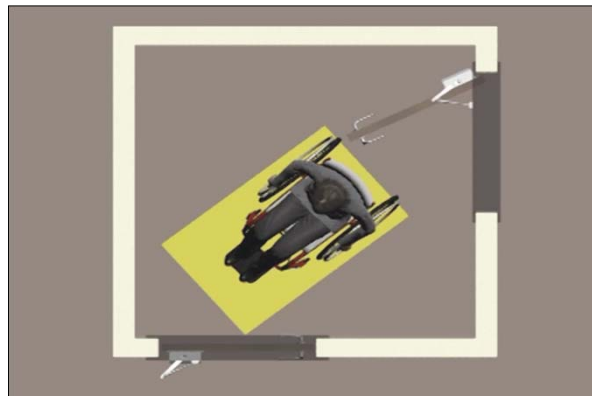
Requirement applies in all cases same direction, in-swinging, out-swinging)



35

Vestibules

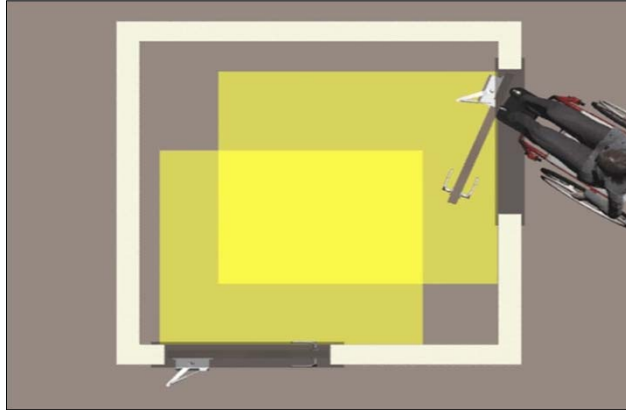
***Tip:* Wheelchair space beyond door swing is advisable in other types of vestibules**



36

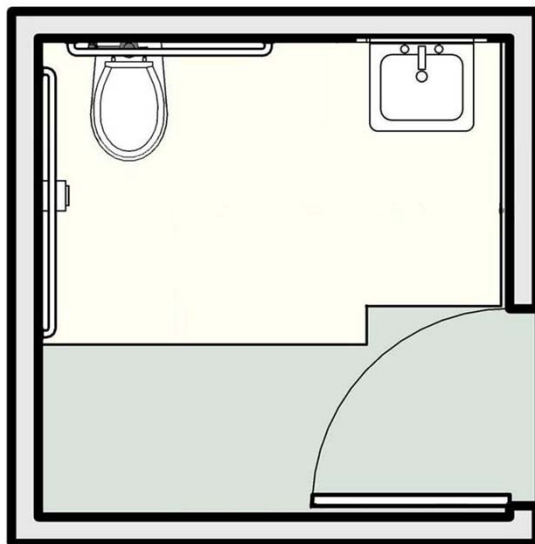
Vestibules

Door maneuvering clearances can overlap



37

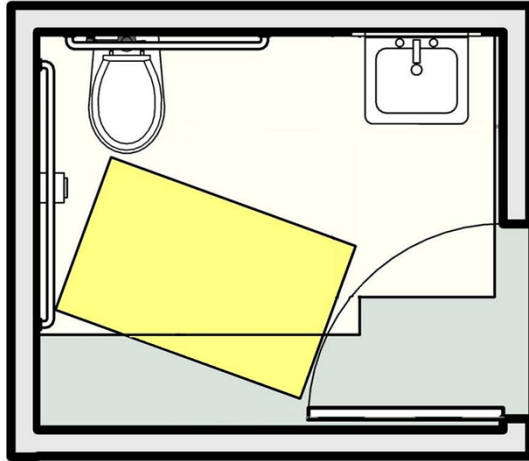
Toilet/Bath/Dressing Rooms



Door cannot
swing into
toilet/bathroom
fixture
clearances or
into dressing
rooms unless ...

38

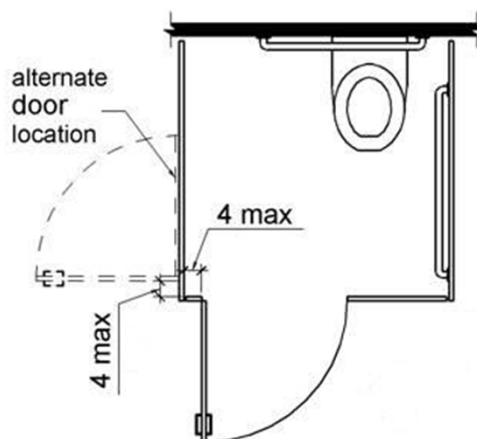
Toilet/Bath/Dressing Rooms



... unobstructed wheelchair space (30"x 48") is provided beyond door swing

39

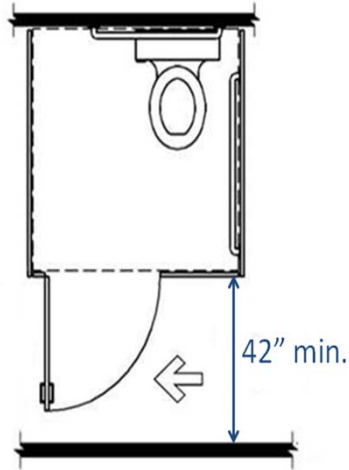
Toilet Stall Doors (604.8)



- Self-closing
- Door pull (both sides)
- Can't swing into minimum stall area
- Location

40

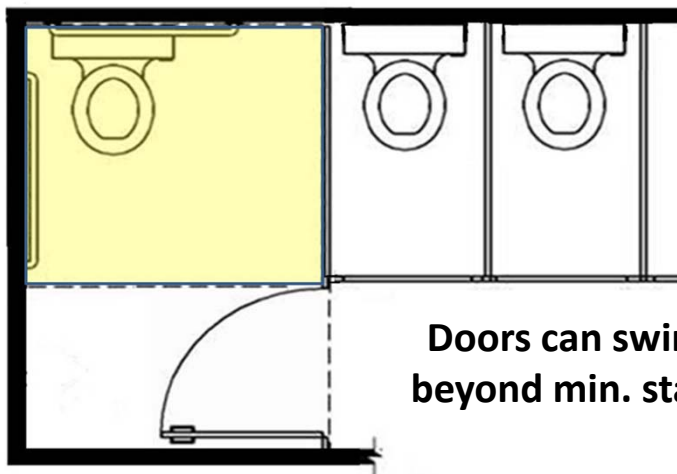
Toilet Stall Doors



**Must meet man. clearances
(42" min. clearance allowed
for latch side approaches)**

41

Toilet Stall Doors



**Doors can swing into stall
beyond min. stall clearance**

42

Hardware (404.2.7)

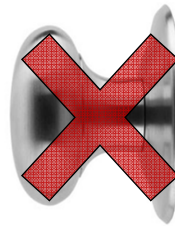
- 1 hand operation
- No tight grasping, pinching, twisting of wrist
- 5 lbf max. force
- Height: 34" – 48" AFF (exception for certain existing doors and gates at pools)



43

Hardware

Levers, pulls, and other types comply
Not compliant: rounded knobs



44

Hardware

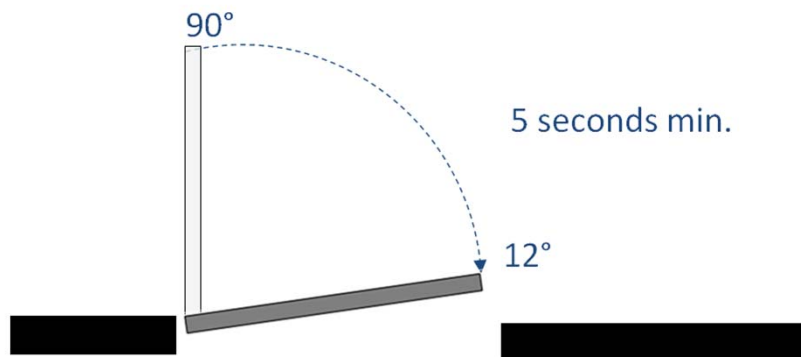
**Closed fist/ loose grip operability = good
(but not required)**



45

Closing Speed (404.2.8)

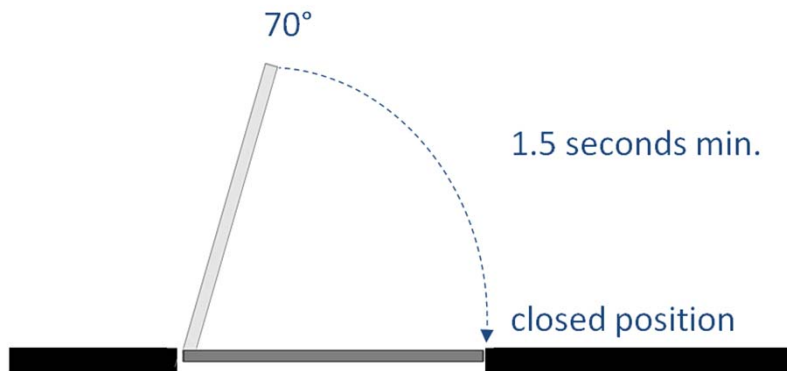
Door Closers



46

Closing Speed

Spring Hinges



47

Opening Force (404.2.9)

5 lbf max.

Except:

- **Fire Doors (min. required by code)**
- **Exterior Hinged Doors (min. feasible)**

48

Opening Force

Exterior Doors: Automation Recommended



**Required at GSA buildings
(Public Building Service Standards)**

49

Opening Force

- **Applies to continuous opening force**

Does not apply to:

- **Initial force to overcome inertia of door**
- **Force to retract bolts/ disengage devices holding door in closed position**

50

Opening Force

Available devices for measuring opening force:

- Door gauges
- Tensionometers
- Fish scale



51

Door Surface (404.2.10)

Bottom 10" must be smooth (full width of door)



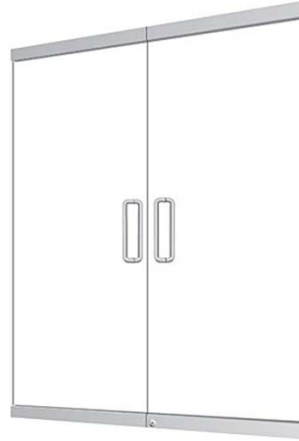
Kick plates can be used to protect door

52

Bottom Surface

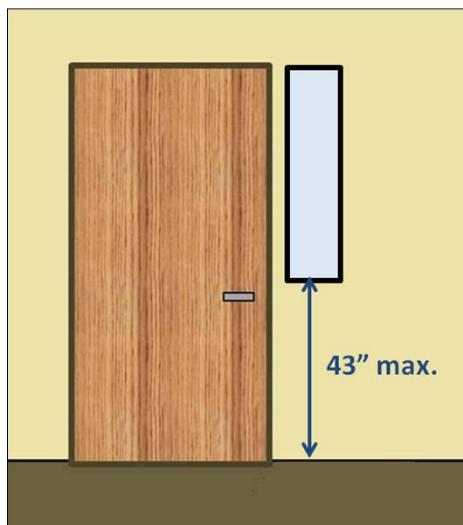
Exceptions:

- Sliding doors
- Some tempered glass doors without stiles
- Existing doors
- Doors not extending to 10" AFF



53

Vision Lights (404.2.11)



If provided, vision
lights: 43" max. AFF
(not required if
bottom edge is
above 66")

54

Other Requirements

55

Signs

Labels / directional signs (with ISA) required at entrances (when not all are accessible)



56

2-Way Communication Systems



**Entrances:
Communication
devices must have
both visual and
audible signals**

57

Notification Devices

Communication accessible units only

Transient Lodging (806.3.2):

- **Visible notification of door knock/bell**



Residential Dwelling Units (809.5.5):

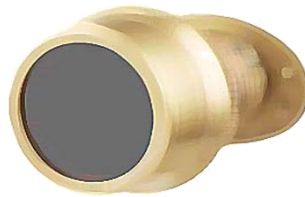
- **Hard-wired doorbell – audible & visible**
- **Means to identify visitors without opening door (e.g., window/ vision panel, peephole, door scope, etc.)**



58

Peepholes

Tip: Prisms/ lenses (door scopes) available that provide wide-angle view and are usable from standing and seated positions



(standards do not address peephole height)

59

Security Barriers (206.8)

Alternative route permitted at security screen devices



60

Security Barriers

Security barriers (e.g., bollards) cannot obstruct accessible route to entrances



61

Automated Doors

62

Automatic and Power-Assisted Doors (404.3)

- Thresholds (same as manual doors)
- Doors in series (same as manual doors)
- Clear width
- Break Out Opening
- Controls
- Maneuvering Clearance
- ANSI/BHMA Standards (for safety and operation)



63

Clear Width (404.3.1)

- 32" minimum in power-on and power-off mode
- If both leaves open when activated the clear width is based on the opening provided by all leaves in the open position



64

Break Out Opening



**Doors on MOE:
32" min. clear break out
opening (emergency
mode)**

Unless:

- **Door has standby power**
or
- **Compliant manual door
serves the same MOE**

65

Controls



**Wheelchair space at controls must be outside
the door swing**

66

Controls



**Control on adjacent wall/post can
provide easier access**

67

Maneuvering Clearance

**Compliance with 404.2.4
required for:**

- **Power-assisted doors**
- **Automatic doors on
accessible MOE (except those
with standby power or that
stay open in power-off mode)**



68

Two BHMA/ANSI Standards

AMERICAN NATIONAL STANDARD
FOR
POWER ASSIST AND LOW ENERGY POWER OPERATED DOORS

SPONSOR



BUILDERS HARDWARE MANUFACTURERS ASSOCIATION, INC.



AMERICAN NATIONAL STANDARDS INSTITUTE, INC.

ANSI APPROVED 4/20/2007

ANSI/BHMA A156.19

ANSI/BHMA A156.10-1999



AMERICAN NATIONAL STANDARD
FOR
POWER OPERATED PEDESTRIAN DOORS



SPONSOR
BUILDERS HARDWARE MANUFACTURERS ASSOCIATION, INC.

Approved 9/20/2005
AMERICAN NATIONAL STANDARDS INSTITUTE, INC.

ANSI/BHMA A156.10

69

ANSI/BHMA

A156.10 Full-Powered Automatic Doors

- Activated by mats or overhead sensors
- Do not require actuation
- Often provided at retail facilities, airports etc.



70

ANSI/BHMA

A156.19 Low-Energy Power-Assisted Doors

- Covers doors that function more like a standard hinged door but with a power closer/opener option
- Require actuation (e.g., push plate)



71

ANSI/BHMA

Both referenced standards address:

- Sensors or actuating devices
- How fast the door opens
- Safety features
- Sign requirements
- General performance



72

Questions?

**You may type and submit questions in the
Chat Area Text Box or press Control-M
and enter text in the Chat Area**

73

U.S. Access Board

(800) 872-2253 (voice)

(800) 993-2822 (TTY)

E-mail: ta@access-board.gov

www.access-board.gov

74

**Thank you for participating
in today's webinar**



**Next scheduled session:
*Accessible Hospitals and Other Health
Care Facilities (July 7th)***

**www.accessibilityonline.org
(877) 232-1990 (v/TTY)**

75