

Disability Statistics: What do they tell us?

Andrew J. Houtenville, Ph.D.
University of New Hampshire

June 15, 2010



Quick Answers

- The promotional sent out had some great questions.
- To be sure I get to them, let me answer them first rather quickly, and then I will get back to them over the course of my talk.

Quick Answer #1

- Where does the 54 million Americans living with a disability number come from?
 - McNeil, J. (1997). Americans with disabilities: 1994-94. Current Population Reports Studies, P70-61. www.census.gov/prod/3/97pubs/p70-61.pdf
 - Survey of Income and Program Participation (SIPP), with a relatively broad definition of disability, but doesn't include persons living in institutions.
 - More recent SIPP estimates are at 54.4 million in 2005, go to www.census.gov/prod/2008pubs/p70-117.pdf

3

Quick Answer #2

- Why are there different numbers out there about the size of the population with disabilities?
 - Surveys use different questions to identify the population with disabilities.
 - New set of six questions used in several sources make comparisons more straight forward (but not identical).

4

Quick Answer #3

- Why are there different numbers out there about the unemployment rate of people with disabilities?
 - Since October 2008, we have the “official” unemployment rate for the population with disabilities from the BLS → 14.7% in May 2010.
 - Go to www.bls.gov/news.release/empsit.t06.htm
 - The erroneous 70% number may have several sources that are not the same as the unemployment rate:
 - 100% – 30% employment rate --- not same as u-rate.
 - 70% of people with disabilities not working want to work

5

Quick Answer #4

- What can we expect to learn about disability from the 2010 Census?
 - Probably very little, because the “long form,” which was the source of 1970-2000 Census data, was replaced by the annual American Community Survey (ACS).
 - The ACS is now a major sources for population statistics in the U.S., and it has six disability questions.

6

Quick Answer #5

- Where can I get more information about disability statistics and the underlying sources?
 - My not-so-unbiased answer is the Rehabilitation Research and Training Center on Disability Statistics and Demographics (StatsRRTC) at Hunter College.
 - Funded by the National Institute on Disability and Rehabilitation Research (NIDRR).
 - The StatsRRTC produces the Annual Disability Statistics Compendium.

7

Purpose of this Presentation

- Describe the purpose of the Compendium
- Highlight some of the statistical patterns found in the Compendium
- Discuss potential uses of the Compendium
- Future expansion of the Compendium
- Accessing the Compendium and technical assistance

8

Purpose of the Compendium

- To provide the disability community with a comprehensive set of the statistics
 - Ready access
 - Up-to-date
 - Variety of topics and sources
 - Population (survey) and administrative statistics
 - Guide to existing sources of data and statistics
- Modeled after Statistical Abstracts of the U.S.

9

Design of the Compendium

- Basically ... a massive set of tables with descriptive summary pages
- Based on existing published statistics
- References to original sources with links
- Access to technical assistance via a toll free number
- A particular focus on state-level statistics in this the first year.
- Issue with 2008 ACS Summary Files

10

Topics Covered

- Population size and disability prevalence
- Employment, poverty, and earnings from work,
- Education (enrollment and attainment)
- Self-reported health status, health behaviors, and other health statistics
- Supplemental Security Income and Social Security Disability Insurance
- Special education
- Vocational rehabilitation
- Monthly employment statistics

11

Topics Covered

- Population size and disability prevalence
- Employment, poverty, and earnings from work,
- Education (enrollment and attainment)
- Self-reported health status, health behaviors, and other health statistics
- Supplemental Security Income and Social Security Disability Insurance
- Special education
- Vocational rehabilitation
- Monthly employment statistics

12

Cautions

- Definition of Disability: Because the Compendium contains statistics from different data sources, the questions and methods used to identify the population with disabilities.
 - See Glossary.
- Definition of Employment/Unemployment: such statistics are constructed in very specific ways.
 - See Glossary.
- Don't compare 2007 and 2008 ACS statistics ... different questions were used.

13

Population Size and Disability Prevalence

- Table 86 - Civilians Living in the Community: 2008
 - 298.6 million
 - 262.5 million without disabilities
 - 36.1 million with disabilities
 - 12.1 percent disability prevalence rate

 - 8.9 percent in Utah
 - 19.0 percent in West Virginia

14

Disability Type

- Tables 91-96 - Civilians Ages 18 to 64 Years Living in the Community: 2008

Any Dis.	19.0 million	
Hearing	4.1 million	21.3%
Vision	3.4 million	18.0%
Cognitive	7.7 million	40.5%
Ambulatory	9.6 million	50.7%
Self-Care	3.3 million	17.5%
Ind. Liv.	6.5 million	34.4%

15

Employment

- Tables 97 and 98. Employment—Civilians with Disabilities Ages 18 to 64 Years Living in the Community: 2008

19.0 million with disabilities

7.4 million with disabilities employed

→ 39.1 percent employed

168.6 million without disabilities

131.0 million without disabilities employed

→77.7 percent employed

16

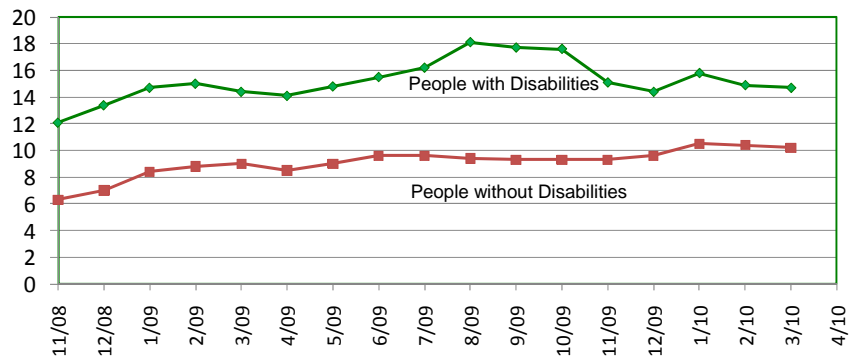
Voc. Rehab. Statistics

- Currently four tables (78-81) using FFY 2007.
 - Table 78: Number of Applications (589,639 individuals)
 - Table 79: Closures (341,030 individuals)
 - Table 80: Closures from initiated/completed services (202,708 individuals)
 - Table 81: Rehabilitation Rate (59.4 percent)
- Working with CSAVR to expand this set of statistics.
- Your recommendations are needed.

17

Recent Unemployment Trend

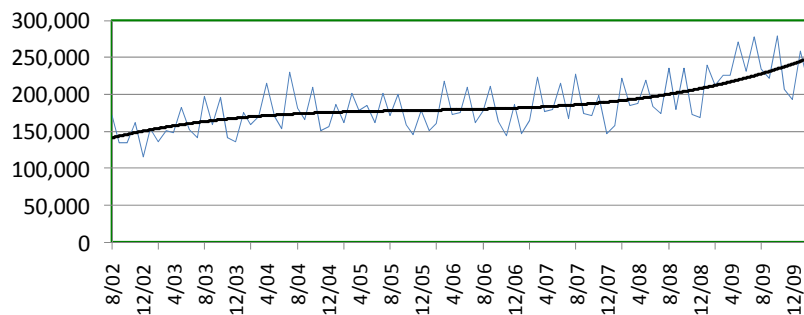
- Table 84. Monthly Unemployment of Civilians Ages 16 to 64 by Disability Status



18

Applications to SSDI

- Table 85. Monthly Number of Social Security Disability Insurance (SSDI) Applications



19

Future Expansion

- Four more years.
- Add more time-trend information
 - May require estimating our own statistics.
- Add some additional sources, e.g., EEOC, non-disability programs serving people with disabilities.
- Include cost statistics for key gov't programs
- (Wish) Descriptions of the current policies and programs associated with statistics.

20

Pop Quiz

- When looking at disability statistics, what is probably the most important question to ask about how that statistics was computed?

21

Accessing the Compendium

- www.DisabilityCompendium.org
 - Accessible pdf and accessible html.
 - Limited print versions (at least this year)
- Technical assistance available at our toll-free number -- 866-538-9521

22

Contact Information

Andrew J. Houtenville, Ph.D.
Institute on Disability
University of New Hampshire
10 West Edge Drive, Suite 201
Durham, NH 03824
(603) 862-3999
Andrew.Houtenville@unh.edu