



# ADA Compliance:

---

## Hotel Guest Satisfaction

Presented by

**John P.S. Salmen, AIA**

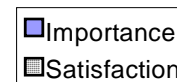
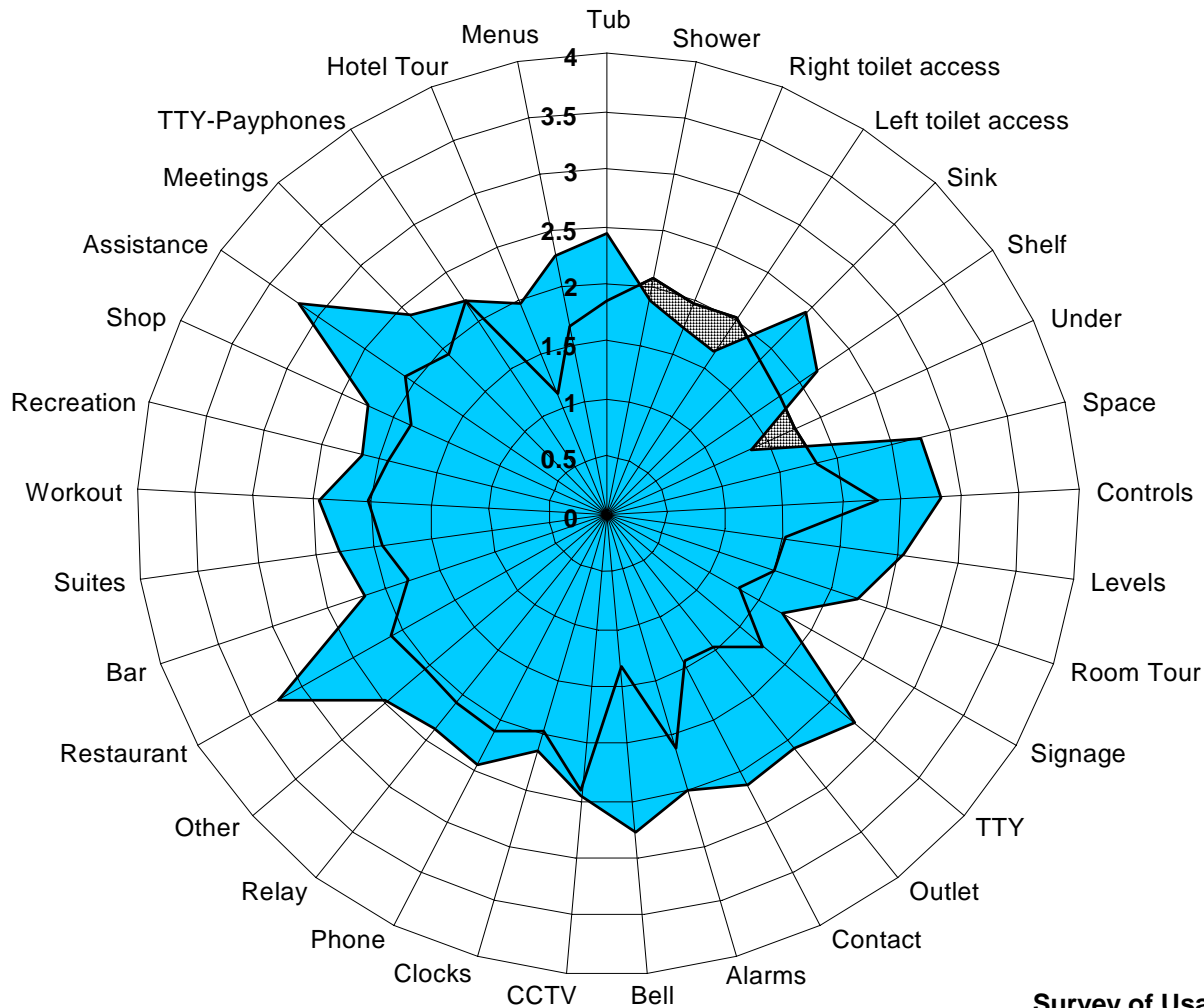
President

Universal Designers & Consultants, Inc.



# The Status Of The ADA

## How's Guest Satisfaction?



Survey of Usage of Accessible Hotel Rooms  
By Travelers With Disabilities June 1999

# Case Examples

---

- 1) Path of Travel
- 2) Accessible Guestrooms

## Path of Travel

Elements were there, but connections were missing.

1. Entry Ramps
2. Accessible Restrooms
3. Accessible Public Pay Telephones
4. Pool
5. Accessible Guestrooms
6. Restaurant

## **A. Elements were there, but connections were missing.**



## B. Entry Ramps



## C. Restrooms





## D. Telephones



## E. Pool





## F. Guestrooms



## G. Restaurant



### Path of Travel

H. Path of Travel is the glue that holds them together.

1. Public right of way to entry
2. Bus drop off to entry
3. Porte Cochere and curb cut locations
4. Parking to entry
5. Lobby to Restaurant upper levels
6. Lobby to meeting rooms
7. Lobby to Pool
8. Lobby to Tennis Courts
9. Pool to Beach

Path of Travel was the Glue that Held them together.

### **H1. Public right of way to entry.**





## H2. Bus drop off to entry

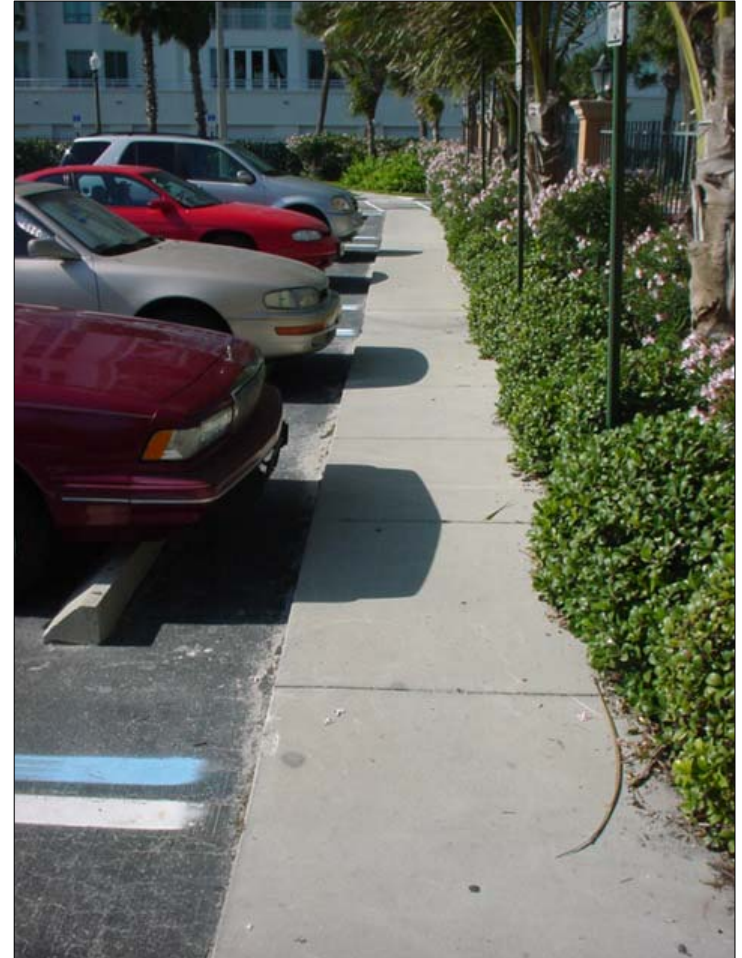


## H3. Porte Cochere and curb cut locations





## H4. Parking to entry



## H5. Lobby to Restaurant upper levels





## H7. Lobby to Pool



## H8. Lobby to Tennis Courts





Path of Travel was the Glue that Held them together.

### H9. Pool to Beach



## Path of Travel

- A. Elements were there, but connection was missing.
- B. Entry Ramps
- C. Restrooms
- D. Telephones
- E. Pool
- F. Guestrooms
- G. Restaurant
- H. Path of Travel was the glue that held them together.

## Accessible Guestrooms

At times of alterations how do you do it right?

- A. Entry doors
- B. Maneuvering space within the sleeping room
- C. Access to desks and writing surfaces
- D. Access to closets
- E. Hardware
- F. Bathroom entry door and thresholds
- G. Turning Space
- H. Maneuvering clearances
- I. Accessible shower
- J. Side access to toilets
- K. Accessible lavatories

## A. Entry doors





## B. Maneuvering space within the sleeping room



## C. Access to desks and writing surfaces



### D. Access to closets



### E. Hardware



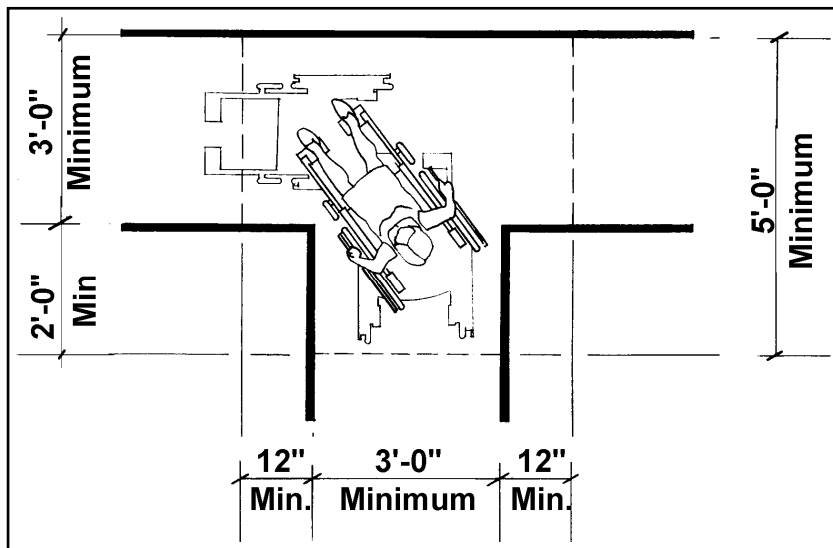
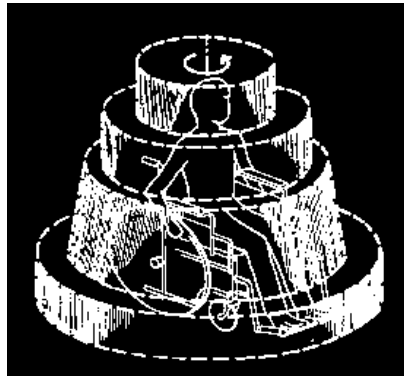


### F. Bathroom entry door and thresholds



## G. Turning Space

**5' diameter  
or  
T turn**



## H. Maneuvering clearances





## I. Accessible shower

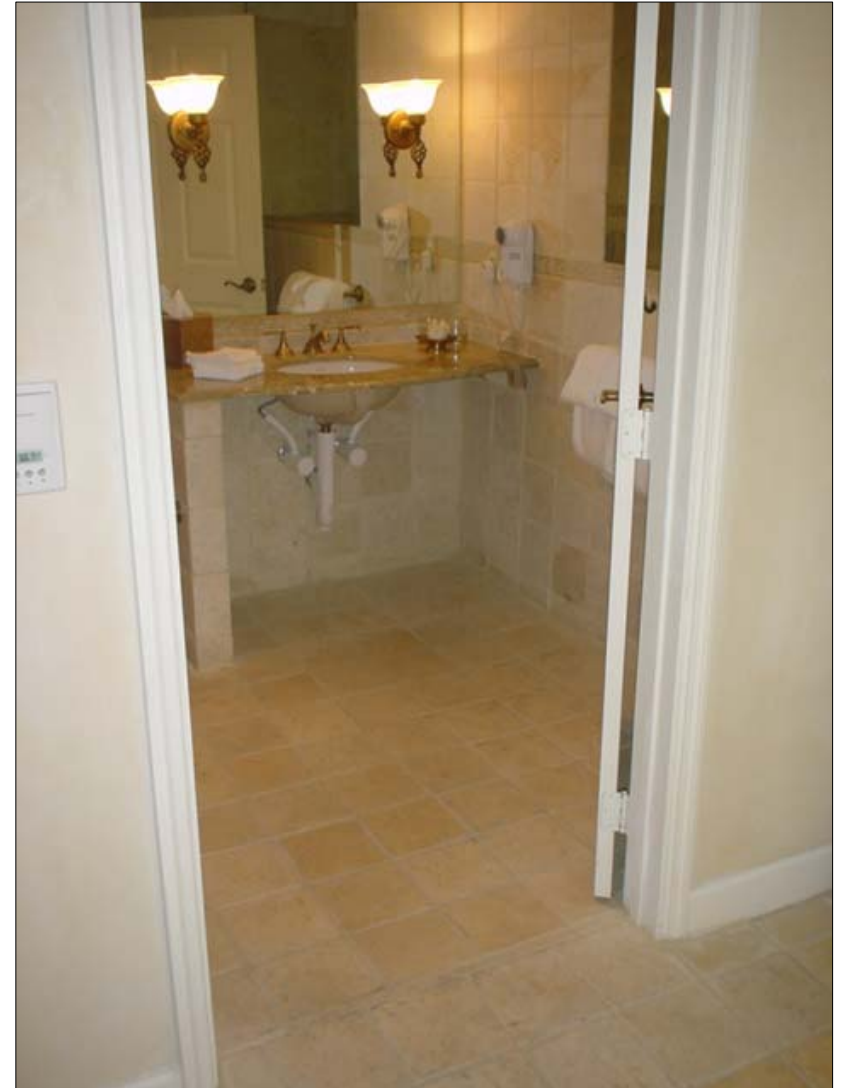




## J. Side access to toilets



## K. Accessible lavatories



## Accessible Guestrooms

At times of alterations how do you do it right?

- A. Entry doors
- B. Maneuvering space within the sleeping room
- C. Access to desks and writing surfaces
- D. Access to closets
- E. Hardware
- F. Bathroom entry door and thresholds
- G. Turning Space
- H. Maneuvering clearances
- I. Accessible shower
- J. Side access to toilets
- K. Accessible lavatories

